

TECHNICAL DOCUMENTATION	29/04/2003	DASHBOARD	Dash ST1
Notes: Dash ST1 technical documentation, dimensions and pinout.			

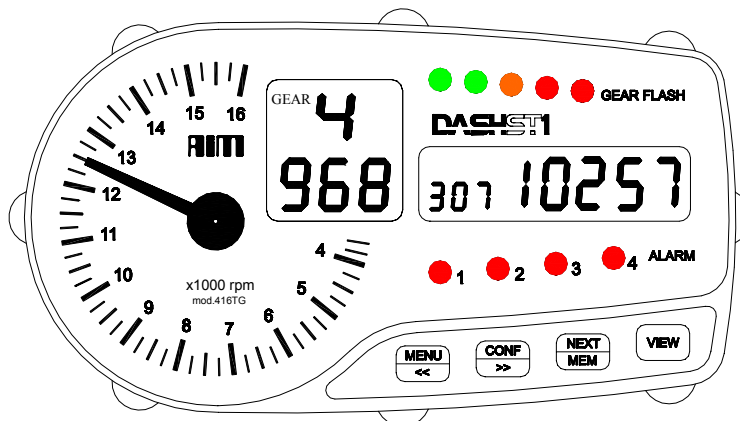


Figure 1: Dash ST1

Introduction

Dash ST1 is a complete and robust dashboard with an analogic rev-counter. This logger is usable for displaying lap time, lap number, RPM, speed and up to 4 analog inputs (temperatures or pressures).

Your **Dash ST1** has a fully configurable sequential shiftlights, warning lamps (for High/Low temperature/pressure alarms) and a small integrated gear number display.

The dashboard is also able to show the engaged gear either sampled from an “on-board” gear sensor or calculated from the RPM vs. speed ratio.

The analogic display is available in 3 different scales: 10,000 / 16,000 / 20,000 RPM.

Please, refer to Figure 2 to get further information concerning the gauge’s display.

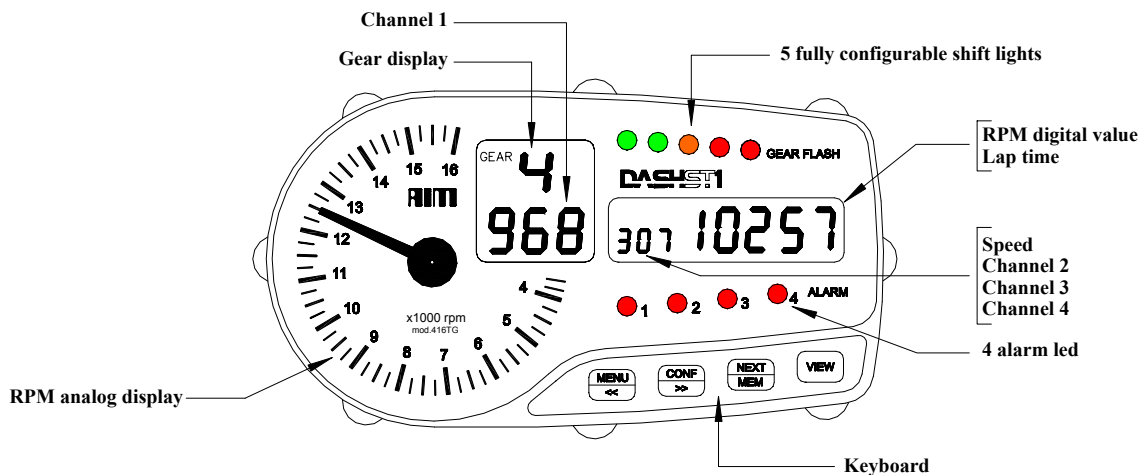


Figure 2: Dash ST1 display

Installation notes

- It is recommended to choose a place where the logger is not in contact with oil or fuel, make sure that the logger is not installed too close to heat sources and protect the instrument from vibrations (if available, use anti-vibration mountings/silent blocks).
- We remind you that your **Dash ST1** is not equipped with internal batteries and is automatically powered by the **EVO 3** data logger. If possible, it is suggested to connect your **EVO 3** to an external 9 – 15 V power source.

How to connect Dash ST1 to the PC

In order upgrade the dashboard's firmware, you have to connect your **Dash ST1** to the PC. Please use the USB data download cable and plug it both in the gauge's USB port and in the PC's USB port, as explained in Figure 3.

Moreover, it is reminded to use a **9 ÷ 15 Volts external power source** in order to be able to switch on the gauge.

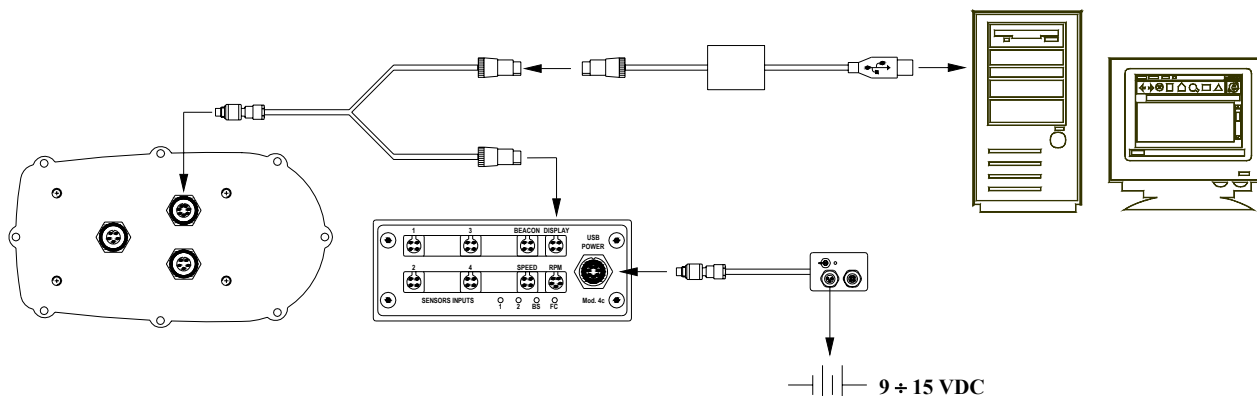


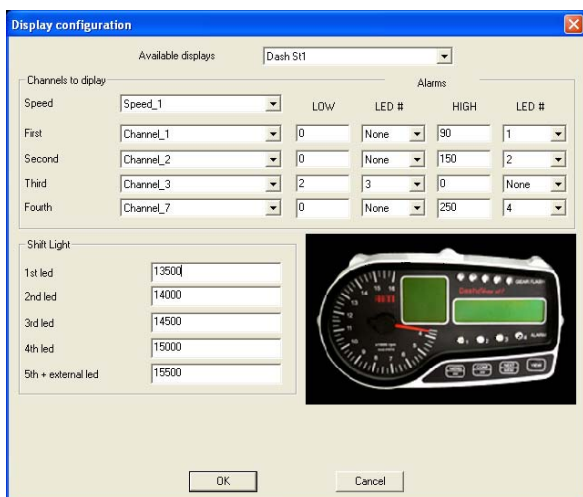
Figure 3: How to connect your Dash ST1 to the PC

Software

Once the data logger has been installed and the sensors have been plugged in it, in order to acquire consistent and correct information, it is necessary to configure the data logger. For a correct configuration, please use **Race Studio 2**, a software properly developed by Aim to configure its instruments and to analyze stored data.

In **Race Studio 2** main window choose EVO 3 data logger and, then, press "System manager" button.

Once you have set the desired input channels (press "channels" button), please press "Display" button: it will appear the following screenshot.



The user has to set the following parameters:

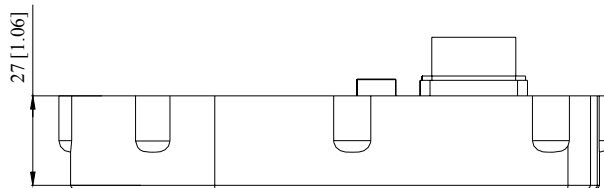
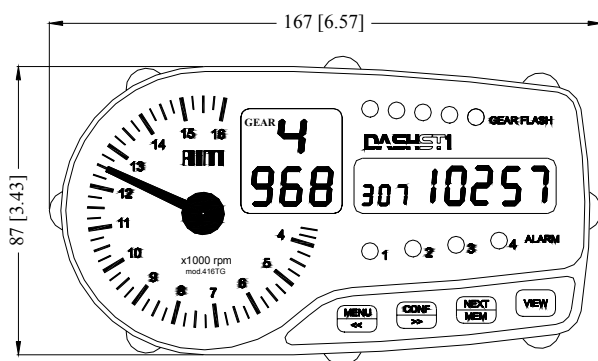
- *Display type*: It is reminded to select "Dash ST1".
- *Channels to display*: the user has to set the displayed speed channel (among the 2 available ones) and 4 analog inputs (only temperatures or pressures) to show on the display. It is reminded that "channel 1" will be shown inside the square

display, while the other 3 analog inputs and the speed channel will be shown inside the rectangular display.

- *Alarms led*: the user may choose both the led and the "alarm type" (i.e. maximum or minimum alarm).
- *Shift lights*.

Once you set all these parameters it is necessary to transmit the configuration to the **EVO 3** pressing button "Transmit" (it is reminded to connect the **EVO 3** both to the PC and, if possible, to an external power source).

Dimensions



Dimensions in millimeters [inches]

Connector details (Gear flash)

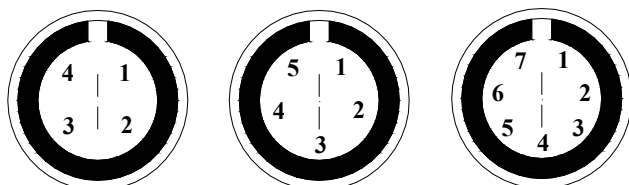
Pin	Function	Pin	Function
1	Gear flash 1	3	Gear flash 2
2	+ V batt	4	+ V batt

Connector details (Keyboard remoting)

Pin	Function	Pin	Function
1	View	4	Menu
2	Mem	5	GND
3	Conf		

Connector details (USB/CAN)

Pin	Function	Pin	Function
1	I2C SCL	5	I2C SDA / Rx D 232
2	I2C SDA	6	RTS 232
3	+ V batt	7	GND
4	I2C SCL / Tx D 232		



4, 5 & 7 pins female Binder 712 connectors pinout: external view

Technical characteristics

General characteristics	Value
Displayed input channels	4
Displayed speed channels	1
External power	Powered by EVO 3
External power EVO 3	9 – 15 VDC
Cable length	1000 mm

Other characteristics	Value
Dash ST1 dimensions	167x87x27 mm
RPM display scales	10,000 / 16,000 / 20,000
Environmental	IP 65

Hi Guys!
See You
On the **Track.**

memotec GmbH

Bauwaldstrasse 1
75031 Eppingen
Germany

+49.7260.920440
+49.7260.920444

info@me-mo-tec.de
www.me-mo-tec.de

further AIM products

MXL
evo3
evo4
MyChron 4
SmartyCam
MyTach
Solo
Hubs
MultiChron
Accessory

further memotec sites

MyChron 4
SmartyCam
AIM Store
Solo

Social Media

 Twitter

 Facebook