

Data Key
User manual



Data Key: its functions



Data key is a storage device optional to AIM **MyChron4** and **GPS Module**: it is instead included in **eBox Gold** and **eBox Extreme** standard kits.

Data Key part number is: **X50M4PC00**.

Data Key has two functions:

- firmware update of **MyChron4**, **eBox Gold/Extreme**, **GPS Module**, **LCU-One**;
- data download from **MyChron4**.

When **Data Key** is connected to **MyChron4**, that can be connected to numerous peripherals like **eBox Gold/Extreme**, **GPS Module** or **LCU-One**, it first checks the firmware version installed on these logger and after it verifies if there are new data to download.

For firmware update and/or data download to be successful it is strongly recommended to always connect **Data Key** to **MyChron4** (and related network if available) off and after power it on.

Note: for Data key to correctly communicate with the PC it is necessary to install AIM USB Driver included in Race Studio 2 software install shield. Race Studio 2 software can be downloaded free of charge from Download Area, Software section of www.aim-sportline.com.

How Data Key updates the firmware

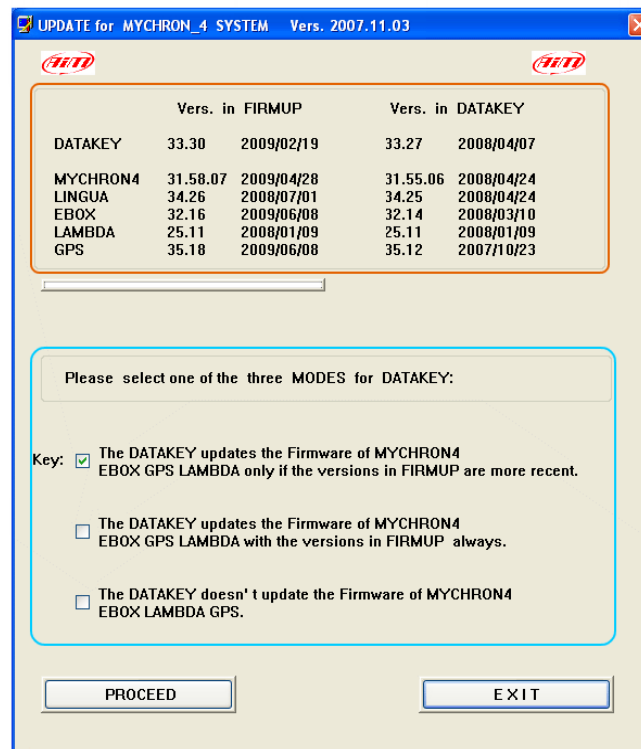
MyChron4, **eBox Gold/Extreme**, **GPS Module** and **LCU-One**, need periodical firmware update and to do this **Data Key** is necessary.

Note: MyChron4 peripherals can only be updated using Data Key connected to MyChron4; it is thereby necessary to leave all the network connected to update each single component.

Here follows updating procedure explanation.

Connect **Data key** to the PC on and visit www.aim-sportline.com download/firmware area.

Download the firmware and run it. This panel appears:



It is made up of two parts.

On top (1) it shows on the left firmware versions included in the downloaded file and on the right firmware versions installed on **Data Key**.

Bottom (2) it shows **Data Key** possible working modes.

Please pay particular attention to the selected option because of it is stored by the key and restored at each usage. It is strongly recommended to check each time that the selected option is the desired one.

According to the selected option different situations can occur.

If each time **Data Key** is connected to **MyChron4** firmware updating starts it means the second option has been selected.

In case firmware updating is attended, the file has been downloaded and run but the procedure does not start, the third option has been selected.

If for any reason firmware downgrading is wished, the file is installed on the **Data Key** but installation is not successful, the first option has been selected.

How Data Key downloads data

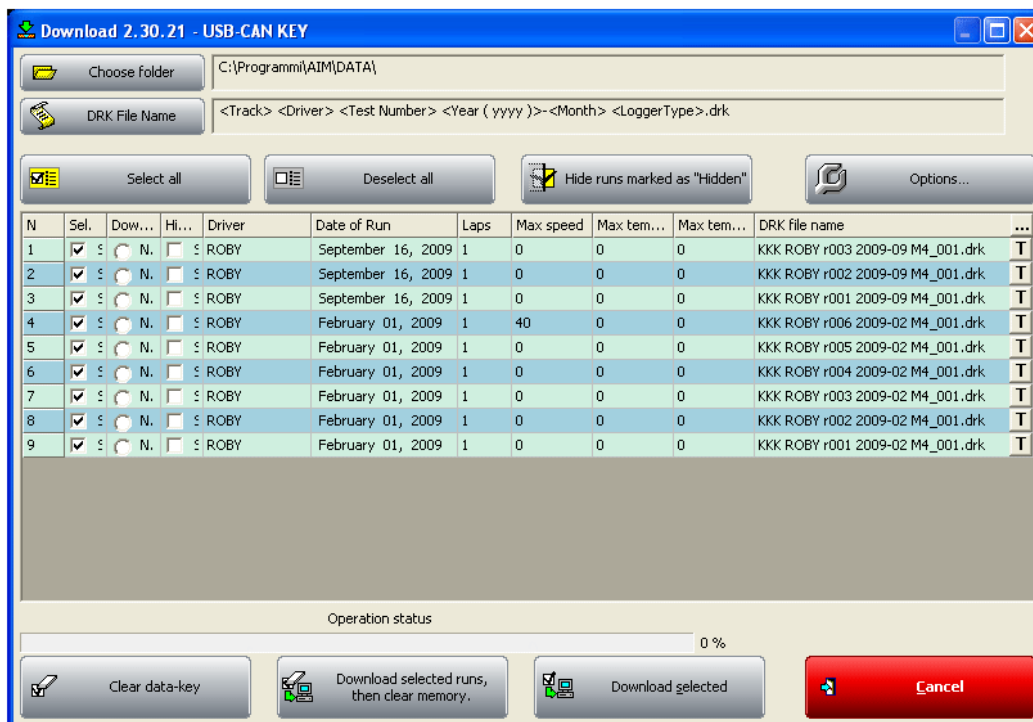
To download data stored in **MyChron4** connect **Data Key** to the logger. Firmware version check is made automatically, selected working mode is followed and then data download procedure is activated.

Available options are three:

- data download starts if data stored in **MyChron4** memory have never been downloaded on that **Data Key**;
- data stored in **MyChron4** memory have already been downloaded on that **Data Key**;
- there are no data in **MyChron4** memory.

Once data have been downloaded it is possible to transfer them on a PC following this procedure:

- connect **Data Key** to the PC USB port
- run Race Studio 2;
- press “Download data”: this panel appears:



As can be observed it allows to manage downloaded data and **Data Key** memory.